

INTRODUCING

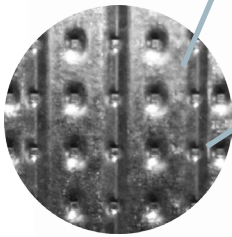
# DIAMOND

METAL FRAMING™

# PRO

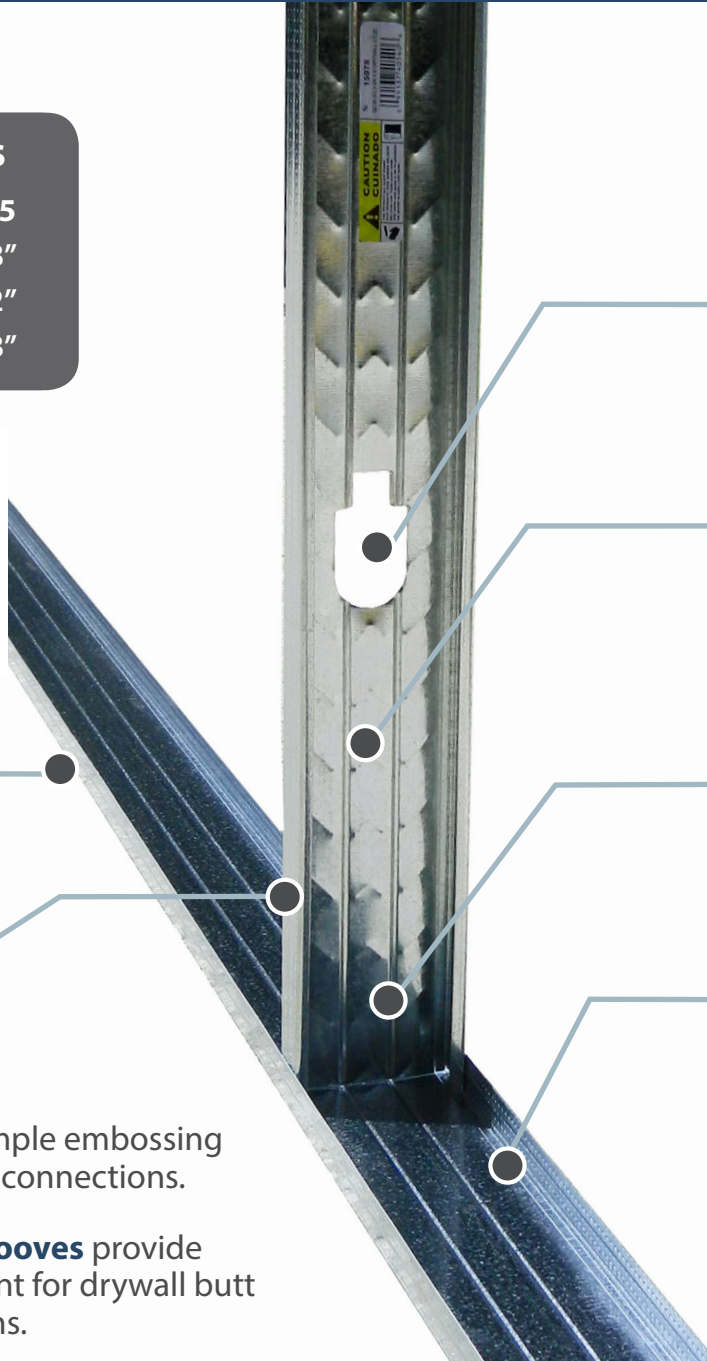
## Stud Sizes

DP 20	DP 25
2 1/2"	1 5/8"
3 5/8"	2 1/2"
6"	3 5/8"



**Flange Knurling** dimple embossing allows for rapid screw connections.

**Multiple Site Line Grooves** provide proper screw alignment for drywall butt and center connections.



**Knockouts** of both 1 1/2" and 3/4" channels.

**Embossed Diagonal Ribs** increase web strength.

**Stiffening Ribs** provide additional strength and rigidity.

**Legs are formed Inward** to provide a friction grip on the studs during installation.

The Diamond Metal Framing™ Pro is an "equivalent" performance test proven, Stud & Track product that combines high strength steel and an innovative profile design.



A GIBRALTAR INDUSTRIES COMPANY 

**Economical Option**

Diamond Pro Steel Framing™ saves time, money and labor costs and is an more energy efficient choice over traditional materials. Additionally, steel framing often reduces building insurance costs.

**Environmentally Friendly**

Diamond Pro Steel Framing™ is 100% recyclable and saves trees by avoiding the use of traditional lumber.

**Better Quality**

Diamond Pro Steel Framing™ produces straighter and stronger walls. Pre-punched holes allow for easier installation of plumbing and electricity. Roll-forming process produces consistent, quality product.

**Safer Than Lumber**

Unlike traditional wood framing, Diamond Pro Steel Framing™ won't burn and can easily meet one hour fire ratings.

**Long Lasting**

Diamond Pro Steel Framing™ will not rot, warp, twist, bow, crack, split, swell or shrink. Steel framing is termite and insect proof and made of the most durable framing material.

**Easier Installation**

Diamond Pro Steel Framing™ is easier to cut and lighter to handle than traditional lumber. Flange Knurling dimple embossing allows for rapid screw connections.



**Fire Resistance Rated**  
Design No. V485 -1 Hour

**ASTM C-645** - Standard Specification for Non-Structural Steel Framing Members

**ASTM C-754** - Standard Specification for Installation of Steel Framing Members to Receive Screw-Attached Gypsum Panel Products

**ASTM A653** - (steel) min. Grade 50 KSI Yield Embossed

**ASTM A1003** - Protective Coating: G40 or equivalent

**ASTM A463** - (General. Spec. A924)

**ASTM E119** - Standard Test Methods for Fire Tests of Building Construction and Materials

**ANSI / UL - 263** - Fire Tests of Building Construction and Materials

**Load Tables**

**DP 25 Composite Limiting Heights (One Layer 1/2" Gypsum Wallboard)**  
1 1/4" Flange with 1/4" Return      Steel Minimum Yield Strength Grade 50

Stud Size	Spacing Inches	5 psf			7.5 psf			10 psf			15 psf		
		L/120	L/240	L/360	L/120	L/240	L/360	L/120	L/240	L/360	L/120	L/240	L/360
1 5/8"	12"	12'-0"	9'-11"	8'-8"	10'-8"	8'-8"	--	9'-11"	7'-11"	--	8'-8"	--	--
	16"	11'-0"	9'-0"	7'-11"	9'-6"	7'-11"	--	9'-0"	--	--	--	--	--
	24"	9'-4"	7'-11"	--	8'-4"	--	--	7'-11"	--	--	--	--	--
2 1/2"	12"	15'-8"	12'-5"	10'-10"	13'-8"	10'-10"	9'-6"	12'-3"	9'-11"	8'-8"	9'-6"	8'-8"	--
	16"	14'-2"	11'-3"	9'-10"	12'-5"	9'-10"	8'-7"	11'-3"	8'-11"	7'-10"	10'-9"	7'-10"	--
	24"	12'-4"	9'-10"	8'-7"	10'-9"	8'-7"	--	9'-8"	7'-9"	--	8'-10"	--	--
3 5/8"	12"	20'-10"	16'-7"	14'-3"	18'-3"	14'-3"	12'-3"	16'-3"	12'-10"	11'-0"	12'-8"	11'-0"	9'-6"
	16"	19'-1"	15'-1"	12'-10"	16'-4"	12'-10"	11'-0"	13'-10"	11'-6"	9'-11"	10'-8"	9'-11"	8'-6"

**DP 20 Composite Limiting Heights (One Layer 1/2" Gypsum Wallboard)**  
1 1/4" Flange with 1/4" Return      Steel Minimum Yield Strength Grade 50

Stud Size	Spacing Inches	5 psf			7.5 psf			10 psf			15 psf		
		L/120	L/240	L/360	L/120	L/240	L/360	L/120	L/240	L/360	L/120	L/240	L/360
2 1/2"	12"	19'-10"	15'-9"	13'-6"	17'-4"	13'-6"	10'-8"	15'-9"	11'-5"	9'-1"	13'-6"	9'-1"	7'-10"
	16"	16'-5"	13'-0"	11'-4"	14'-4"	11'-4"	9'-11"	13'-0"	10'-4"	9'-0"	9'-4"	8'-0"	7'-0"
	24"	16'-0"	11'-10"	9'-4"	14'-0"	9'-5"	7'-8"	11'-10"	8'-1"	--	8'-3"	--	--
3 5/8"	12"	22'-0"	17'-5"	15'-1"	19'-2"	15'-1"	12'-10"	17'-5"	13'-5"	11'-5"	15'-1"	11'-5"	9'-9"
	16"	19'-4"	15'-4"	13'-5"	16'-11"	13'-5"	11'-9"	15'-4"	12'-2"	10'-8"	12'-10"	10'-8"	9'-3"
6"	12"	30'-8"	24'-4"	21'-3"	26'-9"	21'-3"	18'-7"	24'-4"	19'-4"	16'-10"	21'-3"	16'-10"	14'-7"
	16"	28'-0"	22'-3"	19'-5"	24'-6"	19'-5"	17'-0"	23'-3"	17'-8"	15'-5"	18'-8"	15'-5"	13'-5"
	24"	25'-0"	19'-10"	17'-4"	21'-8"	17'-4"	14'-10"	18'-10"	15'-7"	13'-2"	14'-2"	13'-2"	11'-3"